

4

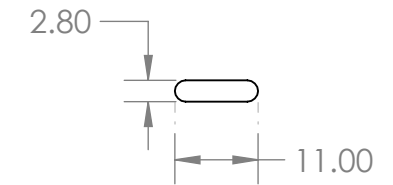
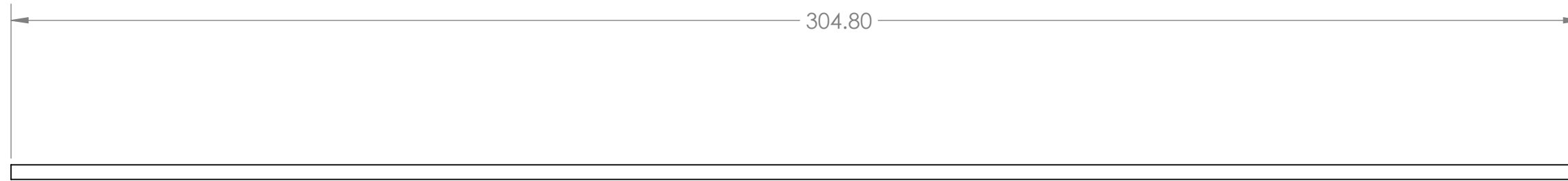
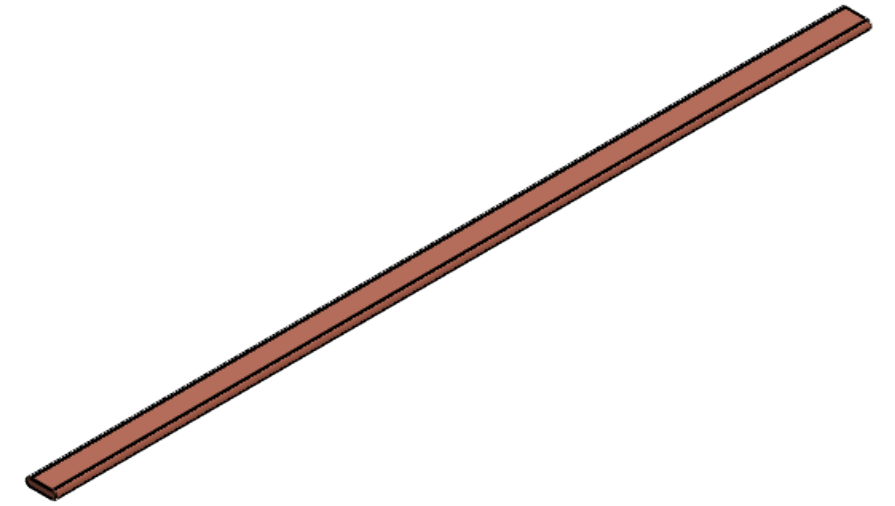
3


2

1

NOTE: UNLESS OTHERWISE SPECIFIED

- 1. MATERIAL: Copper
- 2. Wick Structure: Sintered
- 3. Working Fluid: Water



UNLESS OTHERWISE SPECIFIED: DIMENSIONS ARE IN INCHES TOLERANCES: ANGULAR: $\pm 1^\circ$ BEND \pm .X \pm .1 .XX \pm .01 .XXX \pm .005	DRAWN	NAME	DATE	
	CHECKED			
	ENG APPR.			
INTERPRET GEOMETRIC TOLERANCING PER ASME Y14.5- 2009	PROPRIETARY AND CONFIDENTIAL THE INFORMATION CONTAINED IN THIS DRAWING IS THE SOLE PROPERTY OF COOLING SOURCE. ANY REPRODUCTION IN PART OR AS A WHOLE WITHOUT THE WRITTEN PERMISSION OF COOLING SOURCE IS PROHIBITED.			8x304.8mm Flat Heat Pipe
DO NOT SCALE DRAWING	SIZE	CS400-8304-F-OA	REV	
	SCALE: 1:4		SHEET 1 OF 1	

4

3

2

1

B

B

A

A