

4

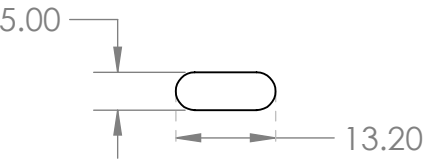
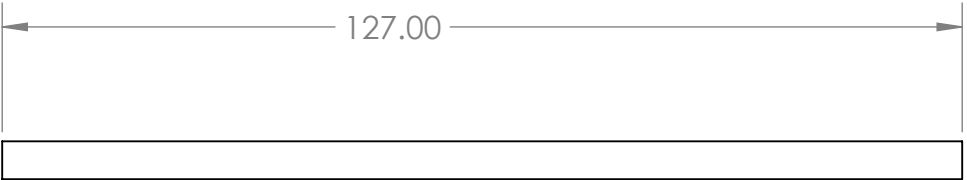
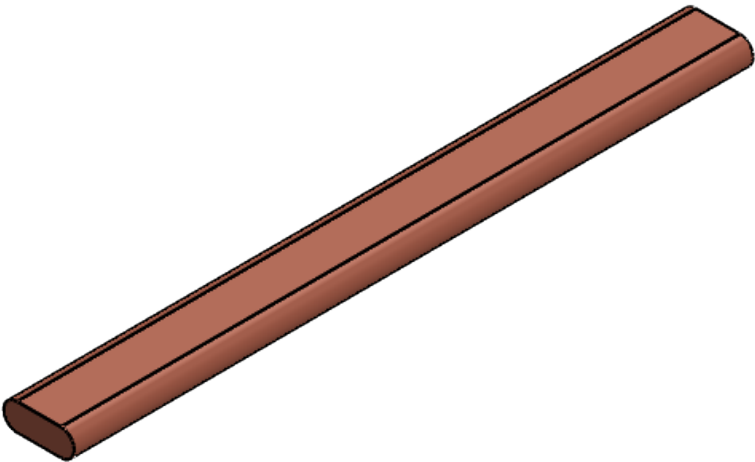
3


2

1

NOTE: UNLESS OTHERWISE SPECIFIED

- 1. MATERIAL: Copper
- 2. Wick Structure: Sintered
- 3. Working Fluid: Water



<div>UNLESS OTHERWISE SPECIFIED:</div> <div>DIMENSIONS ARE IN INCHES</div> <div>TOLERANCES:</div> <div>ANGULAR: $\pm 1^{\circ}$ BEND \pm</div> <div>.X \pm .1</div> <div>.XX \pm .01</div> <div>.XXX \pm .005</div> <div>INTERPRET GEOMETRIC TOLERANCING PER ASME Y14.5- 2009</div> <div>DO NOT SCALE DRAWING</div>	DRAWN	NAME	DATE	<div> LIVERMORE CALIFORNIA</div>	
	CHECKED				
	ENG APPR.				
	<div>PROPRIETARY AND CONFIDENTIAL</div> <div>THE INFORMATION CONTAINED IN THIS DRAWING IS THE SOLE PROPERTY OF COOLING SOURCE. ANY REPRODUCTION IN PART OR AS A WHOLE WITHOUT THE WRITTEN PERMISSION OF COOLING SOURCE IS PROHIBITED.</div>			10x127mm Flat Heat Pipe	
			SIZE	CS400-1127-F-OA	REV
			B		
			SCALE: 1:1		SHEET 1 OF 1

4

3

2

1

B

B

A

A