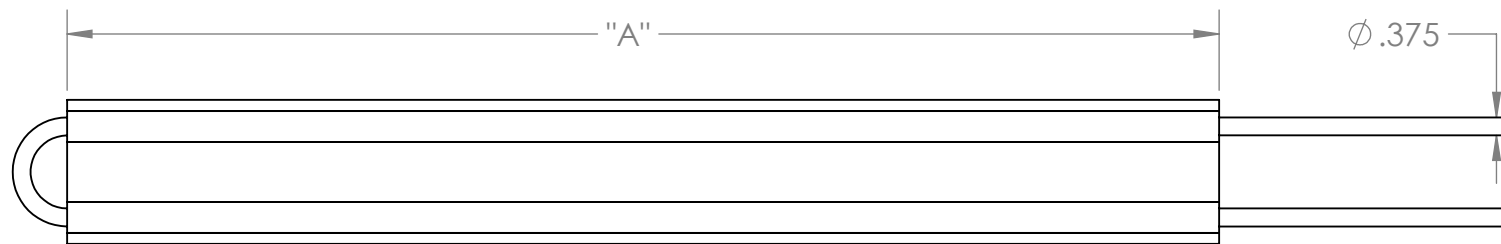


4

3

2

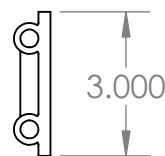
1



Series "A"

Ø .375

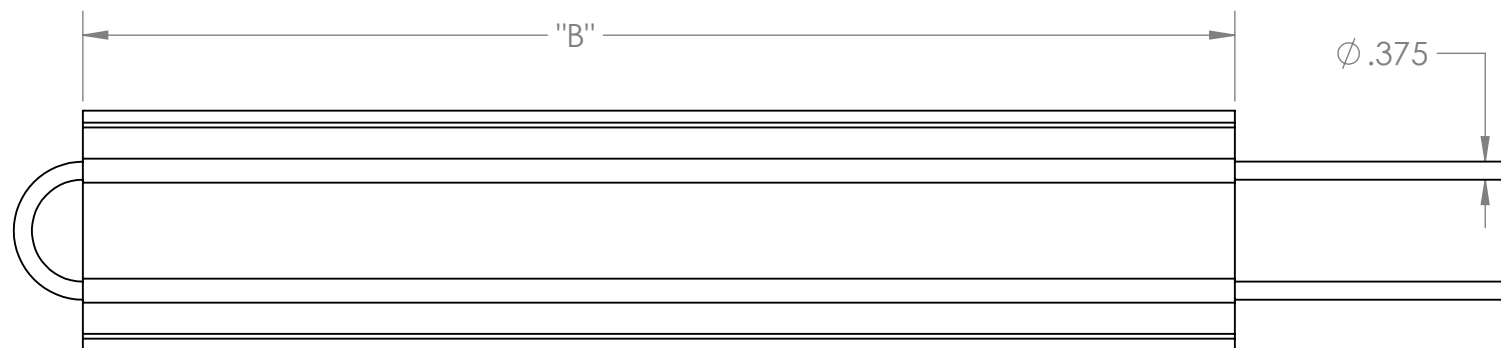
"A"



3.000

Material: Aluminum
Copper Tube

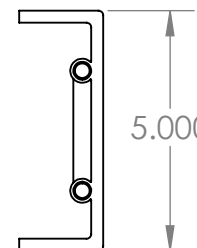
Standard PN	Length "A" In	R(c/w)
CS949-101-N-OA	24	0.02
CS949-102-N-OA	12	0.04
CS949-103-N-OA	6	0.1



Series "B"

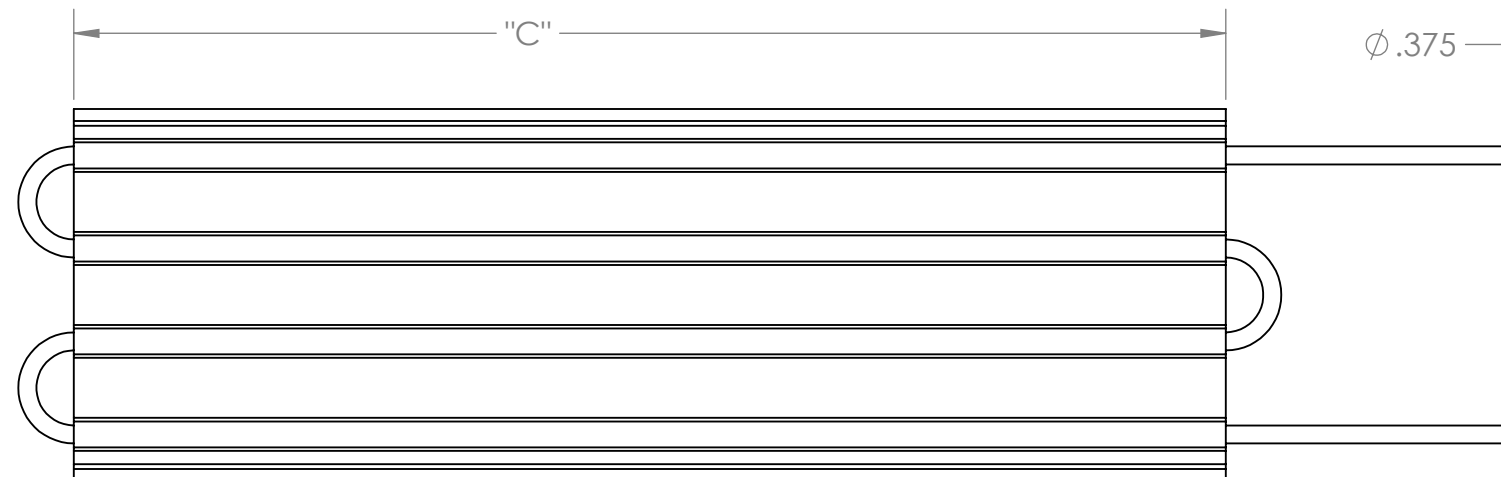
Ø .375

"B"



5.000

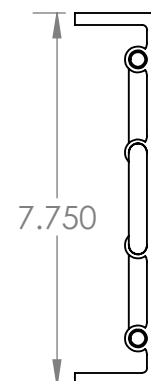
Standard PN	Length "B" In	R(c/w)
CS949-104-N-OA	24	0.02
CS949-105-N-OA	12	0.04
CS949-106-N-OA	6	0.1



Series "C"

Ø .375

"C"



7.750

Standard PN	Length "C"	R(c/w)
CS949-109-N-OA	24	0.01
CS949-108-N-OA	12	0.02
CS949-107-N-OA	6	0.04

UNLESS OTHERWISE SPECIFIED:

DIMENSIONS ARE IN INCHES

TOLERANCES:

ANGULAR: ±1° BEND ±

.X±.1
.XX±.01
.XXX±.005

INTERPRET GEOMETRIC
TOLERANCING PER
ASME Y14.5- 2009

DO NOT SCALE DRAWING

	NAME	DATE
DRAWN		
CHECKED		
ENG APPR.		

PROPRIETARY AND CONFIDENTIAL
THE INFORMATION CONTAINED IN THIS
DRAWING IS THE SOLE PROPERTY OF
COOLING SOURCE. ANY REPRODUCTION IN
PART OR AS A WHOLE WITHOUT THE WRITTEN
PERMISSION OF COOLING SOURCE IS
PROHIBITED.



CS-Liquid Cold Plates

SIZE **B** REV

SCALE: 1:8 SHEET 1 OF 1

4

3

2

1

B

B

A

A